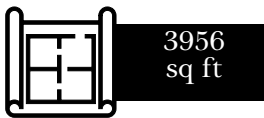




WHITEBRIDGE | 448 WHITEBRIDGE ROAD, HAMPSTEAD



Remarkable new construction home in the peaceful community of Whitebridge. Nestled on 2.50 acres, this home site provides countryside living where you can keep your horses, yet still convenient to beaches, marinas, golf clubs and shopping! Community amenities include swimming pool, tennis, bridle trails, 26-acre nature sanctuary and picnic grounds. The home will include beautiful wide-plank light-oak flooring throughout living areas and upstairs loft, custom gourmet kitchen, built-in wine rack & wine cooler, farmhouse-style lighting and much more! Expansive master suite with sitting area, soaking tub and oversized walk-in shower. List price includes buyers choice of barn or swimming pool. Still time to personalize and make this home your own. Call listing agent for further details and time-line of construction. Estimated August Completion.

MATT & KRISTIN FREEMAN
Broker | REALTOR®



MATT@Thirty4North.com



910-777-3931 or 910-279-4876

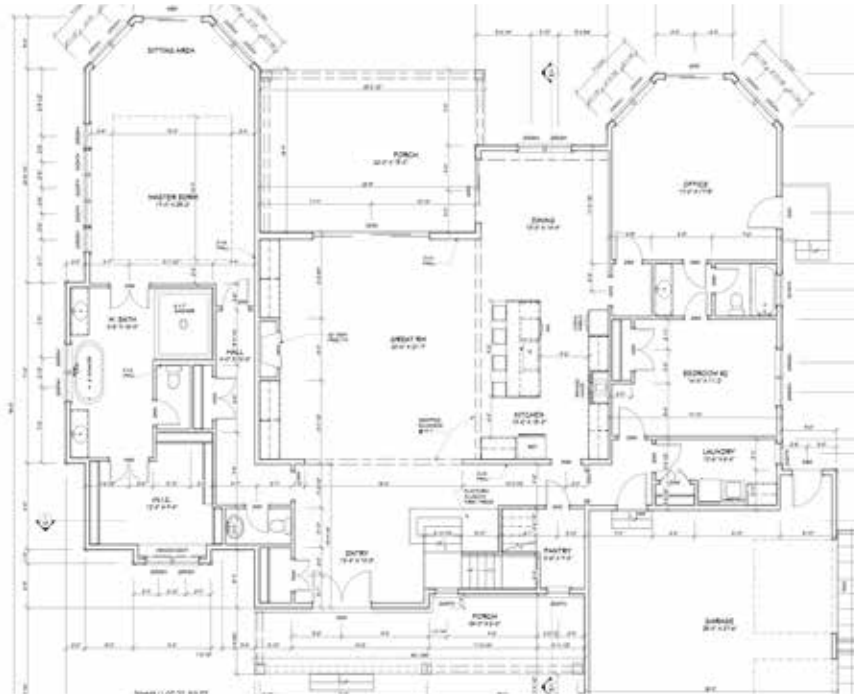


FOR MORE DETAILS ON THIS LISTING

CALL or TEXT 75134 to 25678



thirty4north.com/Whitebridge



1st Floor



2nd Floor

EXTERIOR

- Architectural Shingles w/ Dark Bronze Metal Roof Accents
- James Hardie Fiber Cement Siding, Trim, Fascia & Soffit
- Cypress Tongue & Groove Porch Ceilings
- Jeld-Wen Vinyl Windows
- Mahogany Front Door
- 2- Car Garage
- Seamless Aluminum Gutters
- Screened Porch
- Stamped Concrete Porches
- Full Irrigation and Landscape Package

INTERIOR

- 10' ceilings - 1st Floor, 9' Ceilings - 2nd Floor, 20' Vaulted Ceiling- Family Room
- Custom Floor to Ceiling White Kitchen Cabinets with Granite Countertops and Oversized Dark Wood Island
- Stainless Steel Kitchen Aid Gas Range, Dishwasher, Fridge, and Microwave Drawer

- Built-in Wine Rack with Wine Fridge
- Large Master Suite with Massive 6' x 7' Fully Tiled Walk-in Shower, Freestanding Tub, and 2 personal vanities with granite countertops
- Tub with Tiled Shower wall in Bath 2 and Fully Tiled Shower in Bath 2
- Barn Doors on Pantry and in Master Suite
- Rustic Farmhouse Style Lighting
- Large Laundry Room with Oversized Cabinets
- Wide Plank Light Oak Floors in Living Area and Upstairs Loft
- Tile Floors in all Baths

MECHANICAL & ENERGY EFFICIENCY

- TRANE 14 SEER Heat Pump
- Propane Gas Connection to Fireplace and Gas Stove
- R-15 Insulation in Walls, R-30 in Ceilings & Tyvek - Vapor Barrier House Wrap

CHOICE of POOL or BARN

- Contact agent for full details



www.YourCoastalNCHome.com

Broker | REALTOR®

1001 Military Cutoff Road, Suite 101 Wilmington, NC 28405

Each Keller Williams office independently owned and operated.

